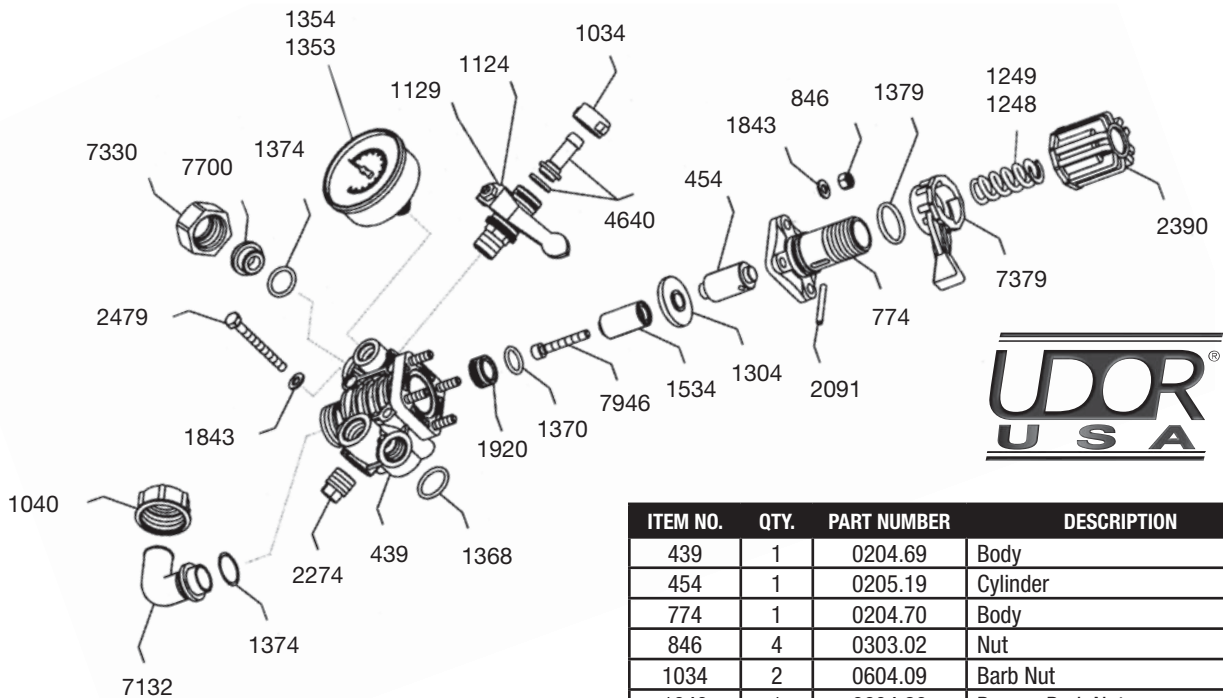


LAWNSHARK SERIES TRUCKS *Replacement Parts*

UDOR 6010.97 Control Unit

Operating Instructions and Parts List



OPERATING INSTRUCTIONS

The control unit features a manual dump valve, pressure control knob, glycerine filled pressure gauge, and two ball valve discharge ports.

1. Before operating or re-operating the pump move lever (Ref. #7379) to the dump position (Right) so the pump will start at zero pressure. **FAILURE TO DO SO WILL VOID THE PUMP WARRANTY.**
2. Turn pressure adjustment knob (Ref. #2390) counter clockwise to relieve spring tension. This step only applies to the initial start up and is not necessary in daily operation of pump.
3. Start unit and let run until air is evacuated from the system.
4. Move lever (Ref. #7379) to the pressure position (Left) open spray gun or spray boom and turn the pressure adjustment knob (Ref. #2390) clockwise until desired operating pressure is achieved.

PROTECT PUMP FROM FREEZING.

If freezing conditions exist, flush pump with a 50/50 mixture of antifreeze and water.

ITEM NO.	QTY.	PART NUMBER	DESCRIPTION
439	1	0204.69	Body
454	1	0205.19	Cylinder
774	1	0204.70	Body
846	4	0303.02	Nut
1034	2	0604.09	Barb Nut
1040	1	0604.26	Bypass Barb Nut
1124	1	0608.45	Ball Valve-Right
1129	1	0608.46	Ball Valve-Left
1248	1	0901.71	Spring (560 PSI)
1249	1	0901.73	Spring (300 PSI)
*1304	1	0903.26	Diaphragm
1353	1	GG-1000BM	Gauge
1354	1	GG-350BM	Gauge
*1368	1	1101.04	O-Ring
*1370	1	1101.06	O-Ring
*1374	2	1101.12	O-Ring
*1379	1	1101.23	O-Ring
*1534	1	1204.31	Poppet
1843	6	1403.07	Washer
*1920	1	1501.50	Seat
2091	1	1512.10	Pin
2274	1	1603.44	Plug
2390	1	1801.32	Adjustment Knob
2479	2	1804.74	Bolt
4640	2	0202.19	1/2" Hose Barb
7132	1	0254.04	Bypass Hose Barb
7330	1	0604.29	Nut
7379	1	0803.21	Lever
7700	1	1603.22	Plug
*7946	1	1810.03	S.S. Bolt

* Parts Included in Repair Kit - #6062.A9. Note: 6062.A9 is the only repair kit to be used in this control unit.