

Model 9910-GS40GI Control Unit

Sub Assembly —
9910-1923 Includes parts
83-87, 89-99, 113 and 114.

Bypass Hose Barb —
Connect directly to tank
without restrictions
or ball valves.

9910-GS40GI Control Unit
mounts directly on pump

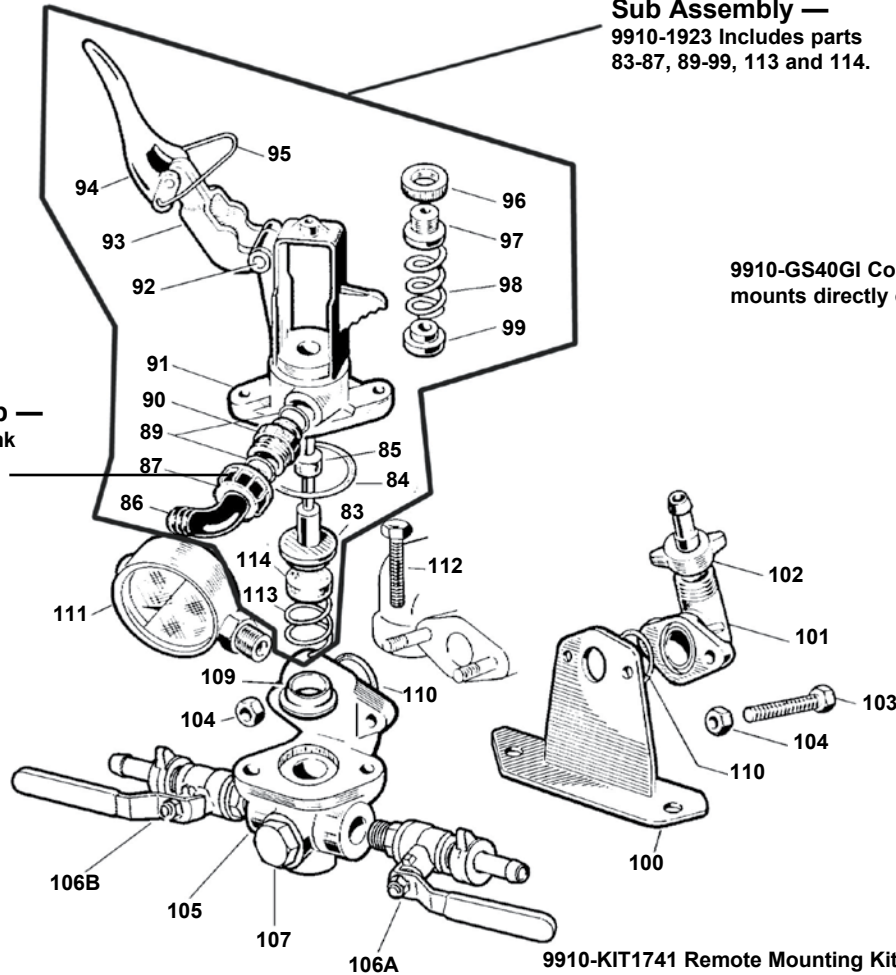


Figure 14

9910-KIT1741 Remote Mounting Kit includes
mounting bracket and hose barb shown above.

| Ref. No. | Part Number | Description | Qty. |
|-----------------|-------------|--|------|
| 83 ¹ | 9910-320433 | Relief Valve Poppet Retainer | 1 |
| 84 ¹ | 9910-320511 | Gasket Seal O-Ring | 1 |
| 85 ¹ | 9910-390140 | Tension Spring Guide/Seal | 1 |
| 86 | 9910-550460 | Hose Barb 1/2" | 1 |
| 87 | 9910-550450 | Barb Nut | 1 |
| 89 | 9910-180101 | O-Ring | 2 |
| 90 | 9910-550440 | Threaded Adapter | 1 |
| 91 | 9910-320410 | Tension Spring Housing | 1 |
| 92 | 9910-320480 | Pin | 1 |
| 93 | 9910-320460 | Lever Guide | 1 |
| 94 | 9910-320470 | Pressure Release Lever | 1 |
| 95 | 9910-320490 | Locking Clip | 1 |
| 96 | 9910-320450 | Pressure Adjustment Nut | 1 |
| 97 | 9910-320440 | Threaded Guide | 1 |
| 98 | 9910-110190 | Tension Spring | 1 |
| 98 | 9910-620810 | Tension Spring (Opt.) (under 100 psi) | 1 |

| Ref. No. | Part Number | Description | Qty. |
|------------------|--------------|---|------|
| 99 | 9910-230120 | Tension Spring Retainer | 1 |
| 100 | 9910-320406 | Remote Discharge Mounting Bracket | 1 |
| 101 | 9910-450145 | Discharge Flange Housing | 1 |
| 102 | 9910-110130 | 1/2" Hose Barb & Nut--(3/8" 9910-110131) | 1 |
| 103 | 9910-160660 | M8 x 35 Bolt | 2 |
| 104 | 9910-390270 | Nut | 2 |
| 105 | 9910-620220 | Relief Valve Body | 1 |
| 106A | 9910-KIT2497 | Ball Valve (left) | 1 |
| 106B | 9910-130491 | Ball Valve (right) | 1 |
| 107 | 9910-130171 | Plug | 1 |
| 109 ¹ | 9910-450110 | Spring Holder | 1 |
| 110 | 9910-550350 | O-Ring | 1 |
| 111 | 9910-550545 | Pressure Gauge (Oil-filled) | 1 |
| 112 | 9910-180370 | M8 x 25 Bolt | 2 |
| 113 ¹ | 9910-320420 | Tension Spring | 1 |
| 114 ¹ | 9910-110122 | Relief Valve Seat (Viton) (Std.) | 1 |
| 114 | 9910-110121 | Relief Valve Seat (Urethane) | 1 |

| Ref. No. | Description | Tightening Torque | |
|----------|-------------|-------------------|------|
| | | In. Lbs. | Nm |
| 103 | Bolt | 171.4 | 19.6 |
| 104 | Nut | 171.4 | 19.6 |
| 107 | Plug | 171.4 | 19.6 |
| 112 | Bolt | 171.4 | 19.6 |

REPAIR & MAINTENANCE KIT AVAILABLE

¹ Control Unit Parts Kit No. 9910-KIT1757 consists of one each of:
Ref. 83 Relief Valve Poppet Retainer, Ref. 84 Gasket Seal O-Ring,
Ref. 85 Tension Spring Guide, Ref. 109 Spring Holder, Ref. 113
Tension Spring and Ref. 114 Relief Valve Seat.