



# ZETA-40E/TG Low Pressure Diaphragm Pump

ZETA-40E/TG low pressure, 3-cylinder diaphragm pumps are excellent for various horticultural, agricultural and lawn care spraying applications.

Simplicity of design and common parts allow easy and affordable maintenance.

ZETA-40E/TG pumps have anodized aluminum bodies, stainless steel valves, plasticized aluminum heads and glassfilled nylon manifolds.

Drive options include:

- 5027.75 4-6.5 HP Gear Reduction
- 7751.A3 1" Solid Shaft
- 4155.01 Hydraulic Motor Adapter Kit
- 7752.A2 1-3/8" 6-Spline Female PTO Adapter and Bolt, Torque Arms, Chains and Safety Shield
- 7753.A6 1-3/8" Six Spline Male Shaft

For industrial uses and spraying applications not listed, please consult UDOR U.S.A.



## SPECIFICATIONS

Maximum Flow .....	10.5 GPM
Maximum Pressure .....	300 PSI
Maximum Pump Speed .....	540 RPM
Maximum Temperature .....	140° F
Inlet Port (Hose Barb) .....	1-1/2" Hose Barb
Discharge Port (Hose Barb) .....	3/4" Hose Barb
Dimensions .....	L-10-1/2" x W-11" x H-12"
Weight .....	32 lbs.
Diaphragm Material	
Standard .....	DESMOPAN

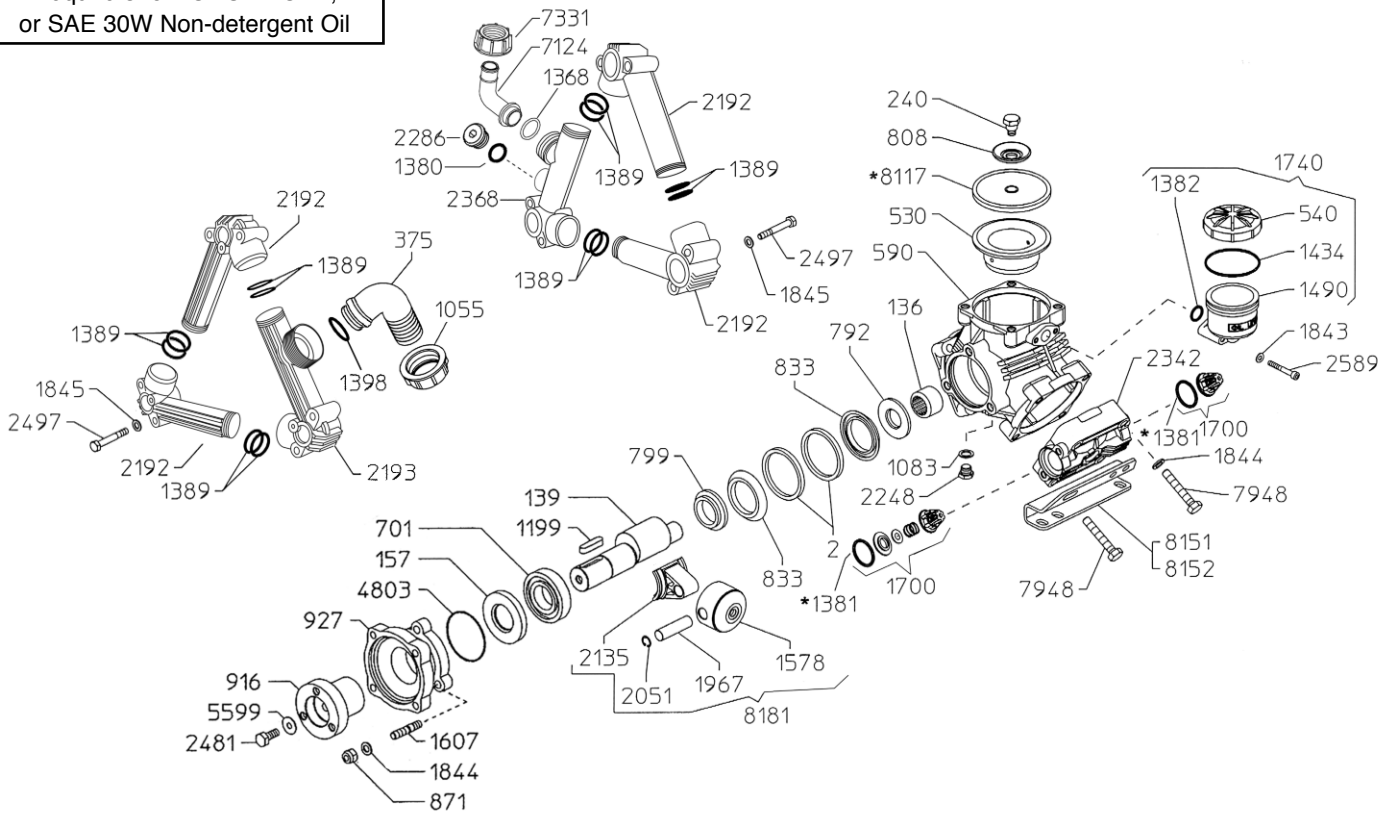
**NOTE** - Protect pumps from freezing. If freezing conditions exist, flush pump and system with a 50/50 mixture of anti-freeze and water.

### UDOR U.S.A., INC.

500 Apollo Drive  
Lino Lakes, MN 55014  
TEL. (651) 785-0666  
FAX (800) 732-2670  
www.udorusa.com

# ZETA-40E/TG - Exploded View Diagram & Parts List

ZETA-40E/TG PUMPS  
Require 32oz. UDOR LUBE,  
or SAE 30W Non-detergent Oil



REF#	PART#	DESCRIPTION	QTY	REF#	PART#	DESCRIPTION	QTY	
	2	02-0001.01	Retainer Ring	2	1578	02-1205.18	Piston	3
	136	02-0006.07	Bearing	1	1607	02-1206.22	Stud	3
	139	02-0002.D7	Crankshaft	1	1700	02-6006.36	Valve Assembly	6
	157	02-0007.05	Seal	1	1740	02-6033.01	Oil Reservoir Assembly	1
	240	02-0102.04	Diaphragm Bolt	3	1843	02-1403.07	Washer	2
	375	02-0202.78	Suction Elbow	1	1844	02-1403.09	Washer	12
	530	02-0206.08	Piston Sleeve	3	1845	02-1403.10	Washer	18
	540	02-0208.98	Oil Cap	1	1967	02-1502.07	Connecting Rod Pin	3
	590	02-0209.76	Crankcase	1	2051	02-1506.15	Snap Ring	6
	701	02-0214.05	Bearing	1	2135	02-1519.30	Connecting Rod	3
	792	02-0301.12	Spacer	1	2192	02-1601.25	Manifold Tube	4
	799	02-0301.24	Washer	1	2193	02-1601.26	Intake Manifold Tube	1
	808	02-0301.43	Diaphragm Washer	3	2248	02-1603.67	Oil Plug	1
	833	02-0302.52	Rod Spacer	2	2286	02-1603.87	Discharge Plug	1
	871	02-0304.04	Nut	3	2342	02-1604.94	Head	3
	916	02-0501.62	Crank Adapter	1	2368	02-1605.29	Discharge Manifold Tube	1
	927	02-0501.79	Adapter Flange	1	2481	02-1804.07	Bolt	1
	1055	02-0604.50	Barb Nut	1	2497	02-1804.10	Bolt	12
	1083	02-0605.49	Gasket	1	2589	02-1805.31	Bolt	2
	1199	02-0801.11	Key	1	4803	02-1101.43	O-Ring	1
	1368	02-1101.04	O-Ring	1	5599	02-1403.02	Washer	1
	1380	02-1101.25	O-Ring	1	7124	02-0253.05	Discharge Elbow	1
	*1381	02-1101.27	O-Ring	6	7331	02-0604.36	Barb Nut	1
	1382	02-1101.29	O-Ring	1	7948	02-1804.45	Bolt	12
	1389	02-1101.41	O-Ring	12	*8117	02-0903.38	Piston Diaphragm (DESMOPAN)	3
	1398	02-1101.42	O-Ring	1	8151	02-1202.63	Mounting Rail - Right Side	1
	1434	02-1101.D1	O-Ring	1	8152	02-1202.64	Mounting Rail - Left Side	1
	1490	02-1203.27	Oil Reservoir	1	8181	02-6015.48	Piston & Rod Assembly	3

\* Parts Included in Diaphragm Repair Kit - #02-8700.60